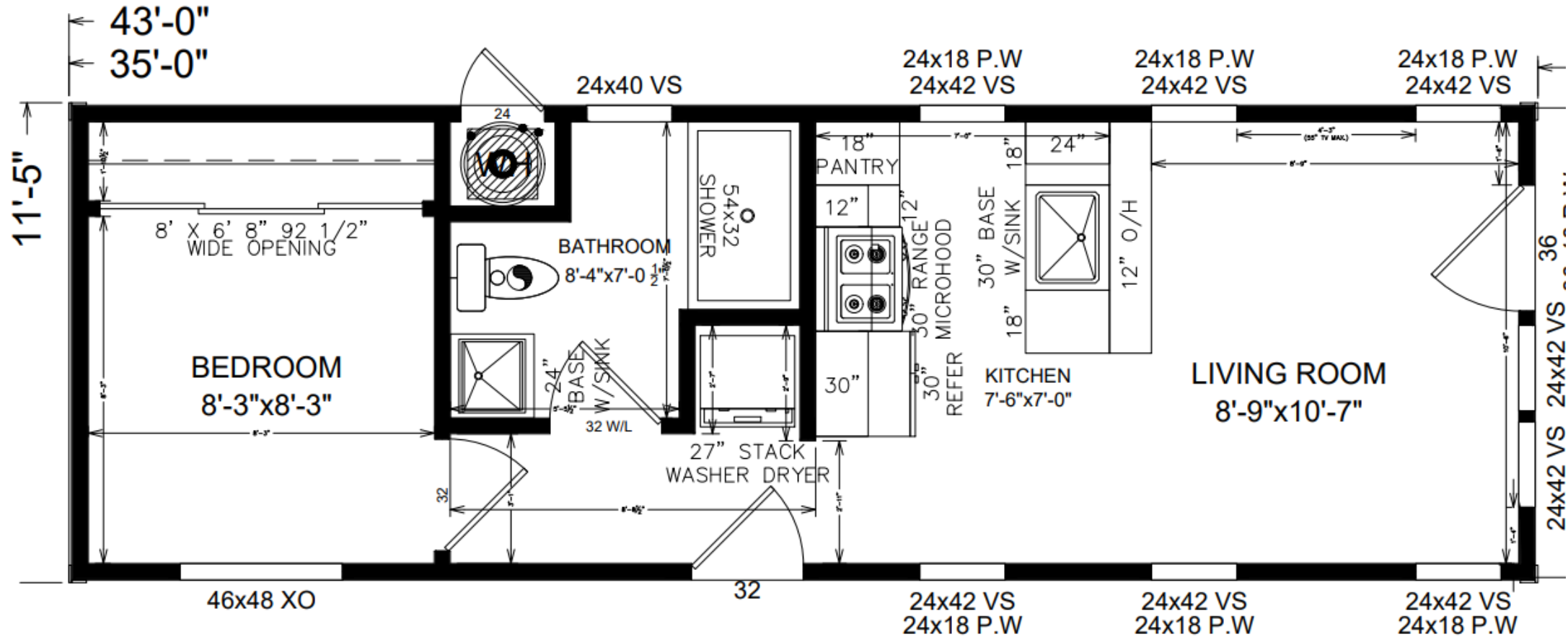


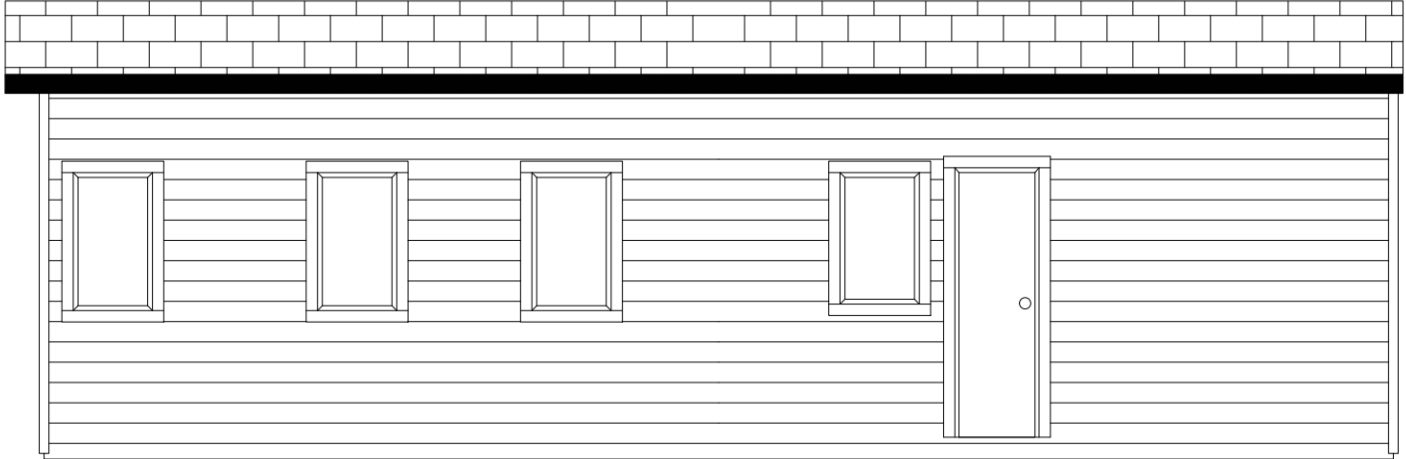
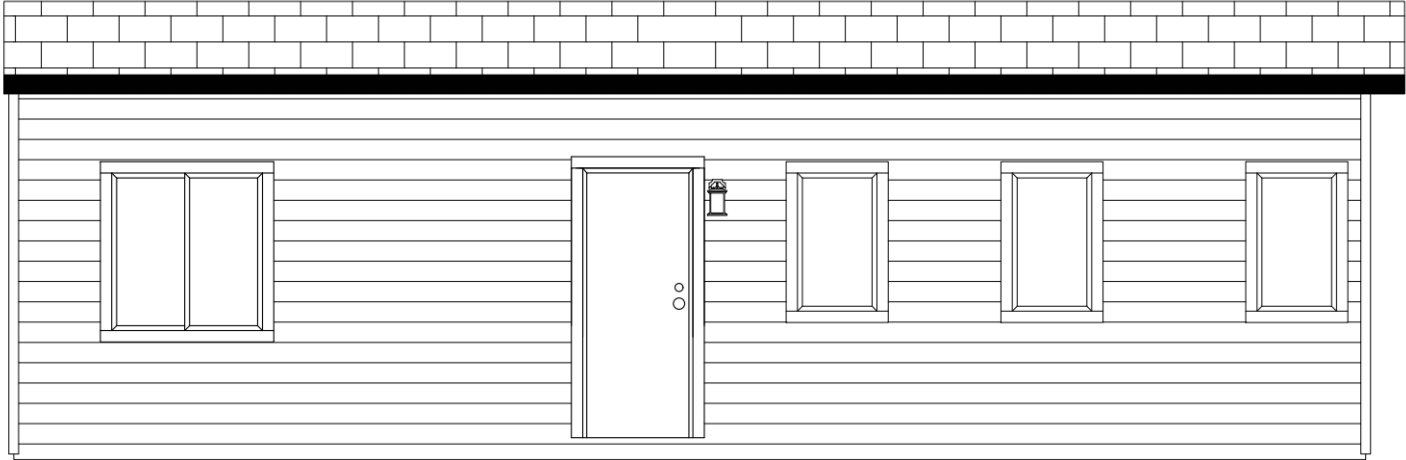
Hillside HS3501 Park Model RV (Lakeside Loft Model Shown)



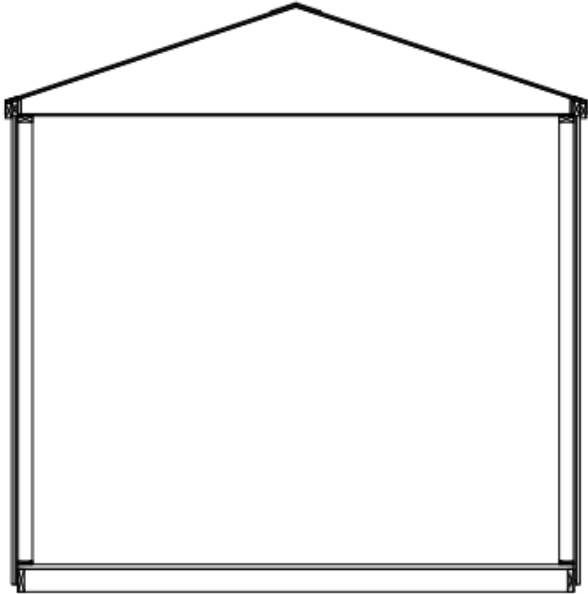
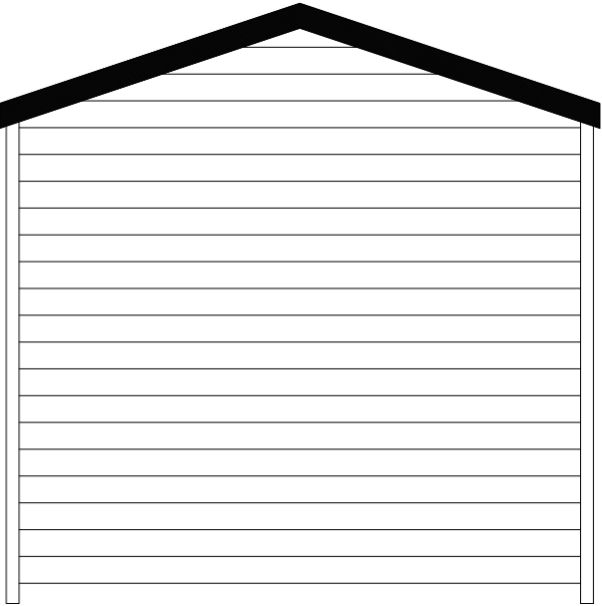
Hillside HS3501 Floorplan



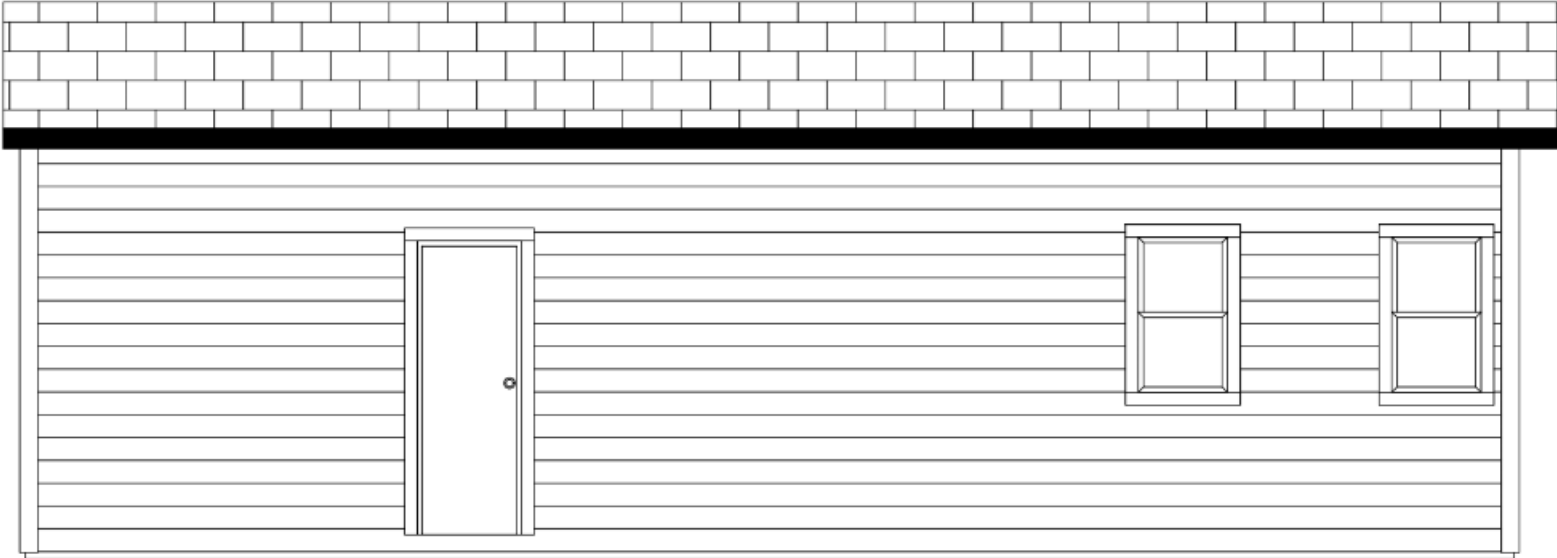
Hillside Sidewall Elevation



Hillside Endwall Elevation & Cross Section



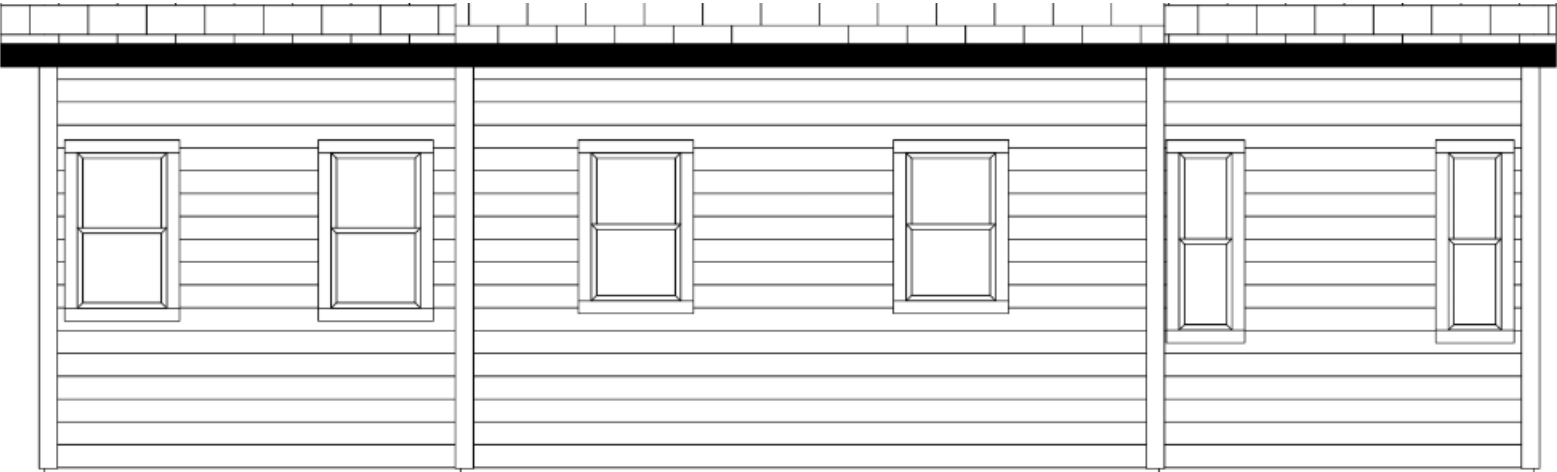
Hillside Sidewall Elevation



24x76

24x42 VS

24x42 VS



24x42 VS

24x42 VS

24x40 VS

24x40 VS

18x48 VS

18x48 VS

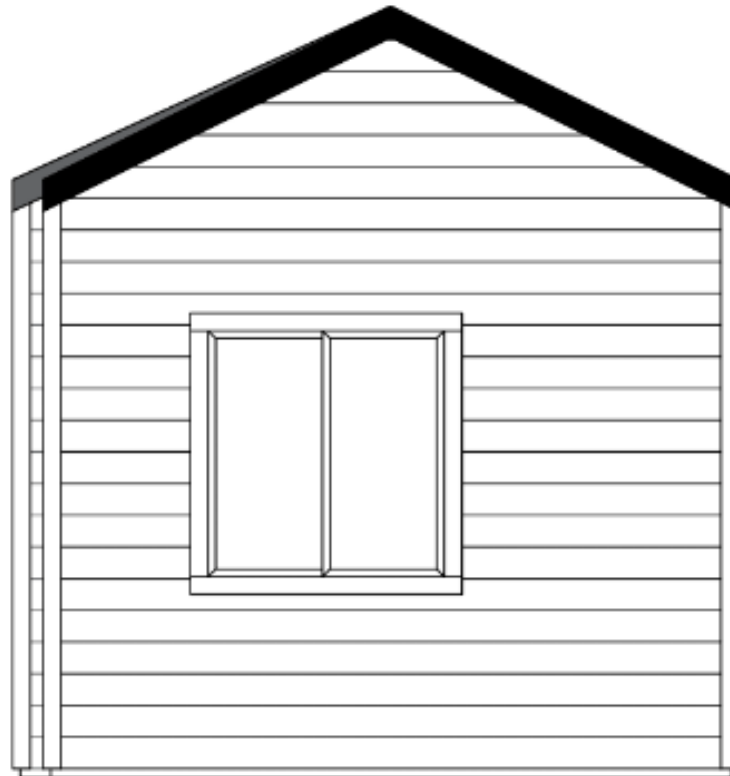


Hillside Endwall Elevation & Cross Section



(2)24x42 VS

36



46x48 XO

STANDARD FEATURES & SPECS



CONSTRUCTION & SPECIFICATIONS

- Built to ANSI 119.5 Code
- 8" I-Beam Chassis w/Outriggers & Removable Hitch
- 80-lb. Roof Load
- 3" Eaves, 12" Front and Rear Overhangs
- Floor Insulation R19
- Wall Insulation R13
- Ceiling Insulation R19
- 2X6 Transverse Floor Joists 16" OC
- 2X4 Exterior Wall Studding – 16" OC
- 5/8" OSB Floor Decking
- White Vinyl-Framed Dual-Glazed Windows
- Tempered Windows Throughout (Exterior Pane – WUI Compliant)
- Inswing ½ Lite Door or White Sliding Glass Door at Entry or (Per Plan)
- 50-Amp Electrical Service
- TV Data/TV Receptacle Coax Cable Hookup w/Outlet & CAT6 Wire (At Living Room)
- Outlet with USB Ports (At Kitchen Counter)

EXTERIOR FEATURES

- Semi-Gloss Exterior Paint with Two-Color Design
- Class A Fire Rated Shingles with 25-Year Limited Warranty
- Fiber Cement Siding

STANDARD FEATURES & SPECS



INTERIOR FEATURES

- Flat Ceilings
- ½” Drywall on All Interior Walls and Ceilings with Square Corners
- Interior Flat Paint (One Color)
- Wood-Cased Windows & Sills
- Contemporary Base Boards
- Crown Molding
- Quartz Countertops Throughout with 4” Quartz Backsplashes
- Black Hardware & Fixtures
- Shaker-Style Interior Passage and Wardrobe Doors
- Pocket Doors Per Plan
- Hardwood Cabinets with Finished Interiors
- Adjustable Cabinet Shelves
- Shaker-Style Cabinet Doors
- Heavy Duty Extended Metal Drawer Guides
- Cabinet Door and Drawer Pulls
- Hidden Hinge Cabinet Doors with Soft Close
- Heavy-Duty Linoleum Flooring Throughout (Except Loft & Stairs)
- Carpeting & Pad on Stairs and Loft
- Fire Extinguisher
- Smoke/CO Detector
- LP Gas Detector

STANDARD FEATURES & SPECS



KITCHEN

- Standard-Sized Openings & Hookups for Stove/Range and Refrigerator
- Microwave Oven W/Range Hood (Stainless Steel)
- 1/3 HP Garbage Disposal
- Single-Cell Undermount Stainless Steel Sink
- Pull-Down Single-Handle Faucet (Brushed Nickel)

BATHROOM

- One-Piece Fiberglass Tub/Shower or Fiberglass Shower (Per Plan)
- Single-Handle Shower Faucet
- Undermount Sink with Single-Handle Faucet
- Towel Bar, Robe Hook, and Paper Holder
- Ceiling-Vented Exhaust Fan
- Elongated Toilet
- Mirrored Medicine Cabinet

BEDROOM

- Sliding Flat-Panel Wardrobe Doors
- Built-In Dresser/Drawers (Per Floorplan)

LIGHTING

- Recessed Can Lights Throughout (Per Plan)
- Wire and Brace for Ceiling Fan (Per Plan)
- Bar-Light at Sink in Bathroom
- Exterior Lights at Each Entry
- Exterior GFI Receptacle

HEATING/PLUMBING

- Dual-Zone Mini-Split (Shipped Loose – Plumbed)
- “PEX” Water Lines
- PVC Drain Lines
- Exterior Hose Bib
- 20-Gallon Electric Water Heater

POPULAR OPTIONS



- Covered Front Porch
- Metal Roof
- Shed Roof
- Sliding Glass Door
- Upgraded Entry Door
- Range with Cooktop
- Refrigerator
- Dishwasher or Dishwasher Ready
- Stackable Washer and Dryer
- Brushed Nickel Hardware & Fixtures
- Ceiling Fan (Shipped Loose)
- Additional Wire and Brace for Ceiling Fan
- Entertainment Center with TV Hookups and Raceway
- Mirrored Wardrobe Doors
- Upgraded Insulation
- 100-Amp Electrical Service
- Tankless Water Heater (Propane or Natural Gas)
- Reverse or Flipped Plan
- Window Blinds (Depends on Availability)
- Lap Interior Wall/Ceiling Accents
- Additional Interior Receptacles & Hookups
- Additional Exterior GFI Receptacle
- Tub/Shower Enclosure

NOTICE:

BPH reserves the right to change or discontinue colors, materials, equipment, specifications, and prices without notice