

Instant Mobile House

# *Designer Series*



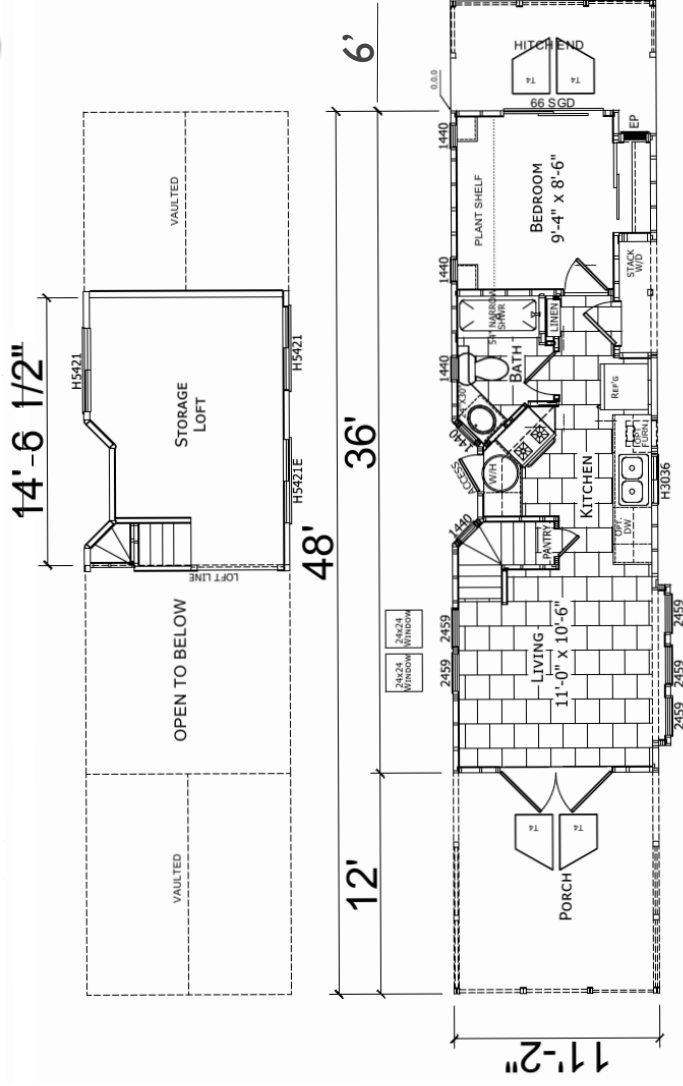
## *Olympus Super Loft Twin Porch*

Mountainous inside  
*Worlds Largest Park Model Loft*



Original Design  
*R. Mark Anderson*

# Certificate of Authenticity



TOTAL AREA: 399 SQ. FT.

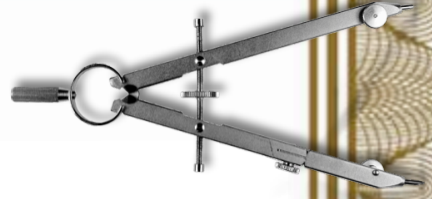


Instant Mobile House

*Olympus Super Loft Twin Porch*

Original Design

*R. Mark Anderson*



Presenting

# *The Designer Series*

Instant Mobile House

*Lofts*



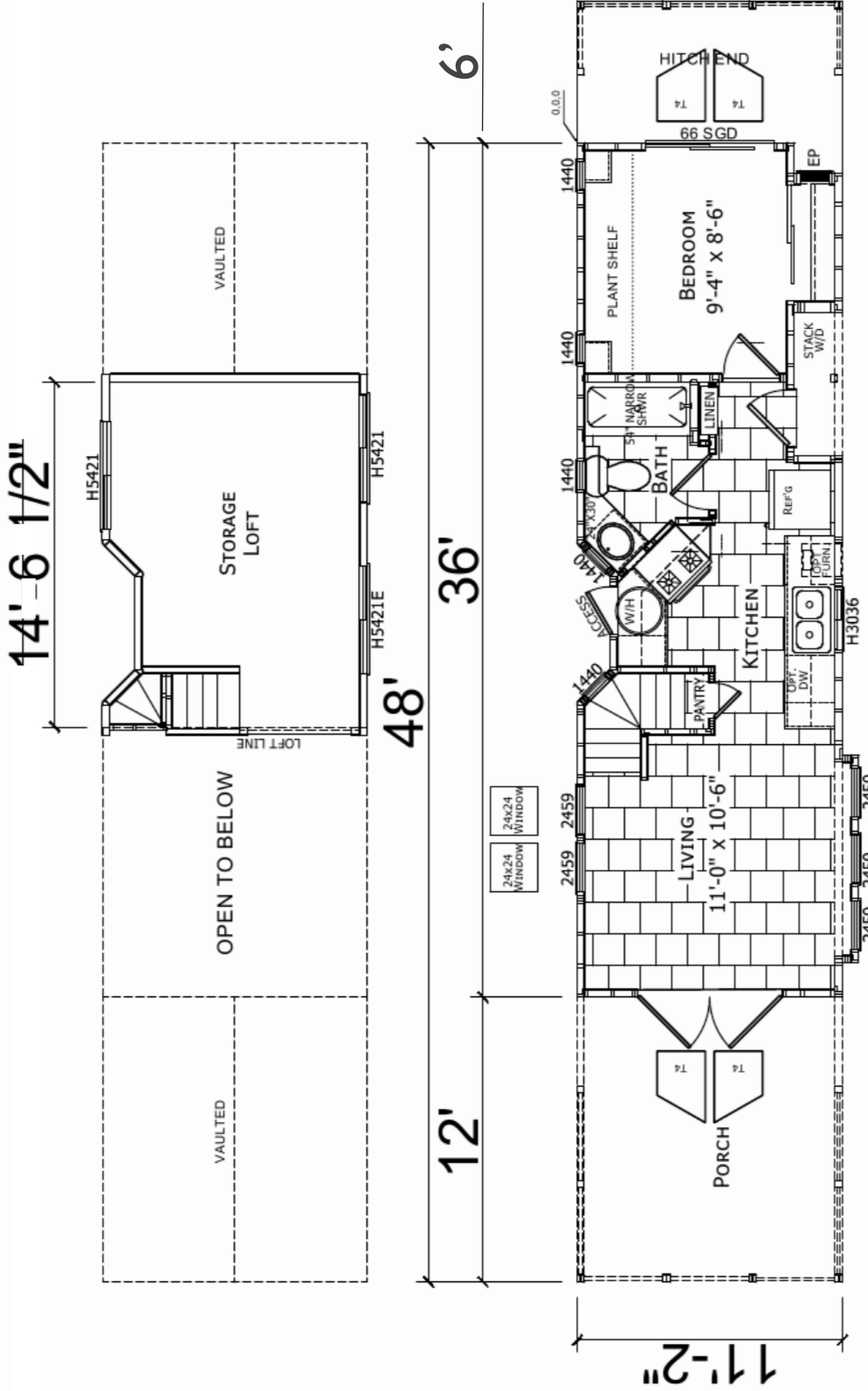
*R. Mark Anderson*

Unique  
Creative  
Original  
Designs



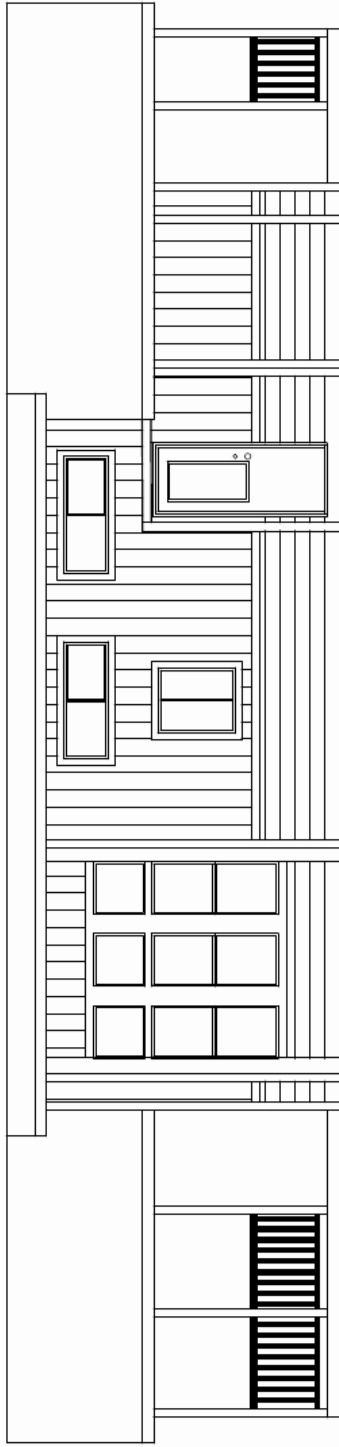
An exclusive  
engagement with the  
Premier Designing  
Engineer of the industry



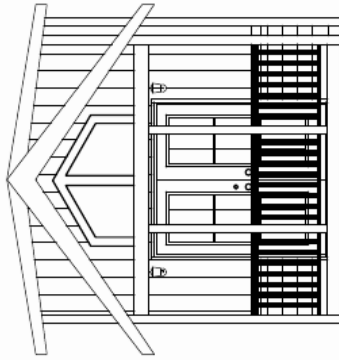


TOTAL AREA: 399 SQ. FT.

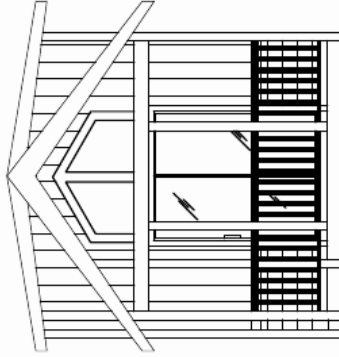
<b>WARNING:</b> THIS FLOOR PLAN IS THE INTELLECTUAL PROPERTY OF INSTANT MOBILE HOME ASSOCIATE FACTORY REPRODUCTION IS PROHIBITED WITHOUT WRITTEN CONSENT		APPROVER'S SEAL	
Twin Porch Olympus Super Loft		MODIFICATIONS	
TITLE: Literature Plan		PROPRIETARY AND CONFIDENTIAL	
DRAWN BY: R.M.A		THESE DRAWINGS AND SPECIFICATIONS ARE ORIGINAL.	
DATE: Recorded		R. Mark Anderson	
SCALE: 1/8" = 1'-0"			
MODEL: Twin Porch Olympus Super Loft		SHEET: 1	



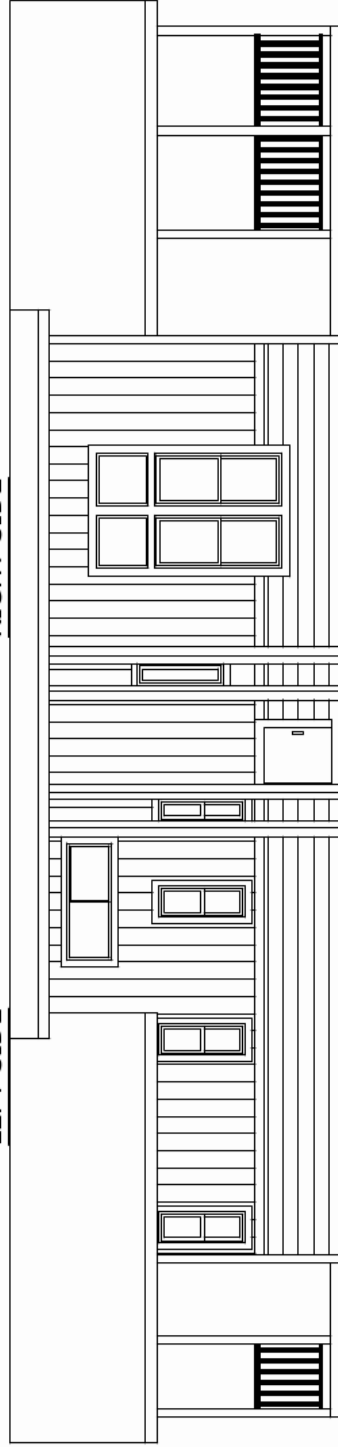
FRONT SIDE



LEFT SIDE



RIGHT SIDE



REAR SIDE

**WARNING:** THIS FLOOR PLAN IS THE INTELLECTUAL PROPERTY OF INSTANT MOBILE HOME ASSOCIATE FACTORY REPRODUCTION IS PROHIBITED WITHOUT WRITTEN CONSENT

	APPROVER'S SEAL		MODIFICATIONS	MODEL: Twin Porch Olympus Super Loft	SHEET: 2
	PROPRIETARY AND CONFIDENTIAL THESE DRAWINGS AND SPECIFICATIONS ARE ORIGINAL. <i>R. Mark Anderson</i>		TITLE: Elevation Plan	DRAWN BY: <i>R.M.A.</i>	DATE: <i>Recorded</i>

*Twin Porch  
Olympus Super Loft*

SCALE: 1/8" = 1'-0"

Instant Mobile House  
*Designer Series*

## Incorporated Features

### General Construction:

Cemplank® Fiber Cement Exterior Lap Siding  
Engineered Roof Truss  
30-Year Architectural Style Shingles  
2 x 6 Floor Joists at 16" On Center  
5/8" 4x8 T&G OSB Floor Decking  
9.5' Residential Sidewalls  
R-14 Floor; R-11 Walls; R-33 Roof Insulation  
RVIA Approved and ANSI 119.5 Approved  
Residential Dual Pane Vinyl Low"E" Windows  
Exterior Lights at Each Entrance  
Rear Door w/Mini Blind Insert

### Beautiful Kitchens & Baths:

Hardwood Cabinet Doors and Face Frame  
Crown Molding and Adjustable Shelves on All Overhead Cabinets  
Plant Shelves  
Deluxe Whirlpool® 30" Gas Range  
30" Range Hood with Light and Fan  
Deluxe Whirlpool® Double Door Refrigerator  
White Porcelain Steel Deep Sink  
Contemporary High Pressure Laminate Countertops  
Ceramic Tile Backsplash and Crescent Edge  
GFI Receptacle for Kitchen and Bath  
Deluxe Recessed Can Lighting (LED)  
One-Piece Fiberglass Tub/Shower w/Single Lever Diverter  
Bath Exhaust Fan  
China Bath Sink with Single-Lever Faucet  
Medicine Cabinet with Light Bar  
Elongated Toilet

### Tasteful Interiors:

Knockdown Tape & Texture Finish w/ Rounded Corners Throughout  
Flat Ceiling Throughout  
Decorative Faux Blinds  
Sliding Glass Entry Door with Vertical Blinds  
Plush Carpet in Bedrooms  
Quality Vinyl Tile Flooring in Kitchen & Living Room Designer Selected  
Lighting Package  
Emergency Egress Window in Bedroom and Loft Area  
Sliding Mirrored Wardrobe Doors in Bedroom with Drawers Below  
Choice of Interior Paint Colors  
Rocker Switches  
Overhead Cabinets in Master Bedroom w/Reading Lights  
and Nightstands per plan  
Tape & Texture Entertainment Center with HDMI Cable

### Comfort & Safety:

Water Shut-Off Valves Throughout  
100 AMP Exterior Panel Box  
Smoke Detector  
Carbon Monoxide Detector  
Fire Extinguisher  
110V 20-Gallon Electric Water Heater  
Ceiling Fan in Living Room  
Wire & Brace for Ceiling Fan-Master Bedroom  
Exterior GFI Receptacle  
Exterior Hose Bib  
Rocker Switches

Due to continuous product development and improvement square footage and other dimensions are approximate, prices, specifications and materials are subject to change without notice or obligation.

